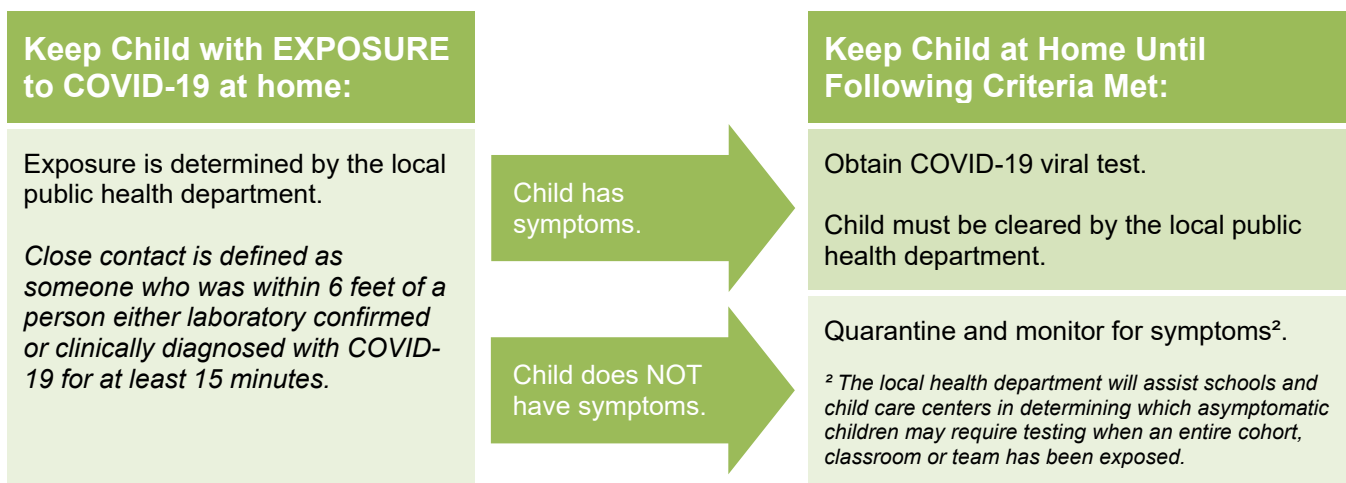
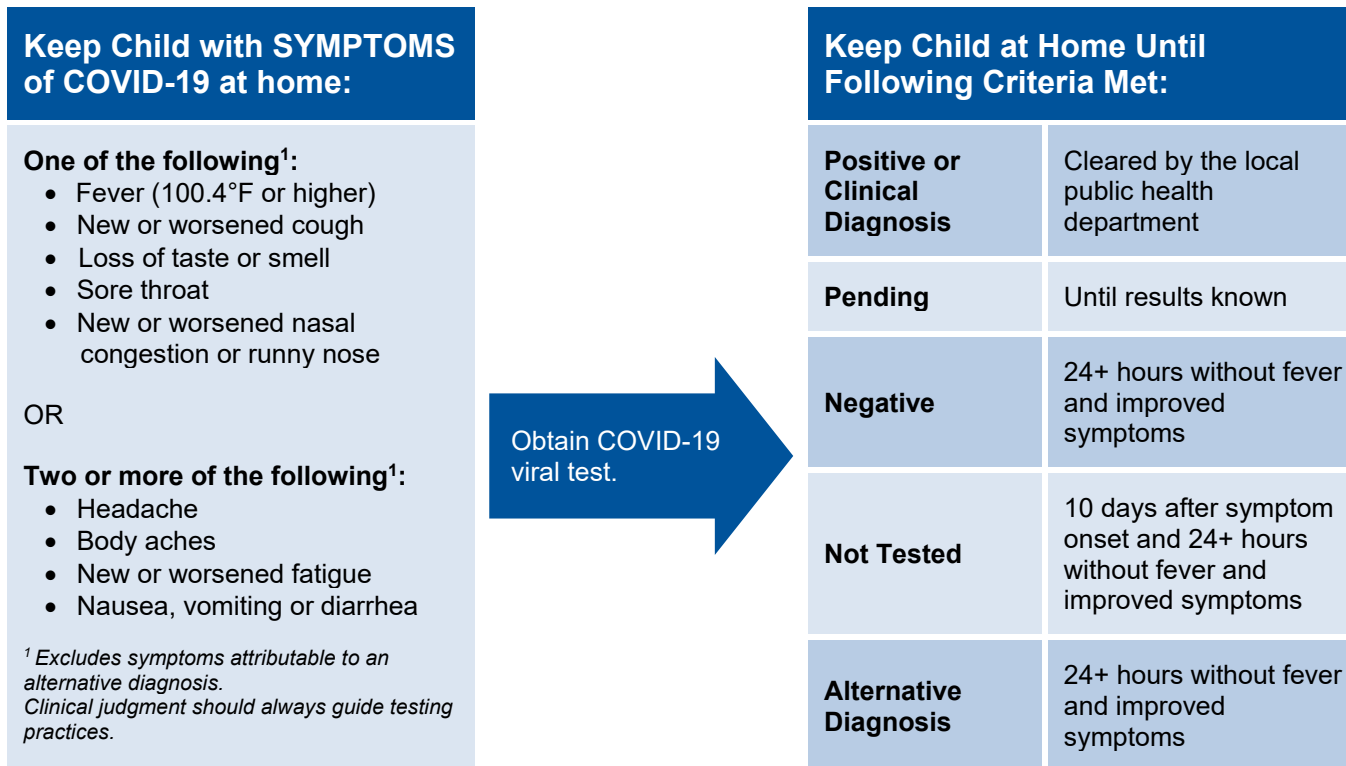


Child In-Person Participation Algorithm

Ohio Public Health Advisory Level 2-4 Counties†



† Counties under Level 1 Health Advisory should follow guidance by the local public health department.

Please follow Ohio Administrative Code 3701-3-13 <http://codes.ohio.gov/oac/3701-3-13> for exclusion for diarrhea and other infectious diseases.